



# First-aid Information Kit

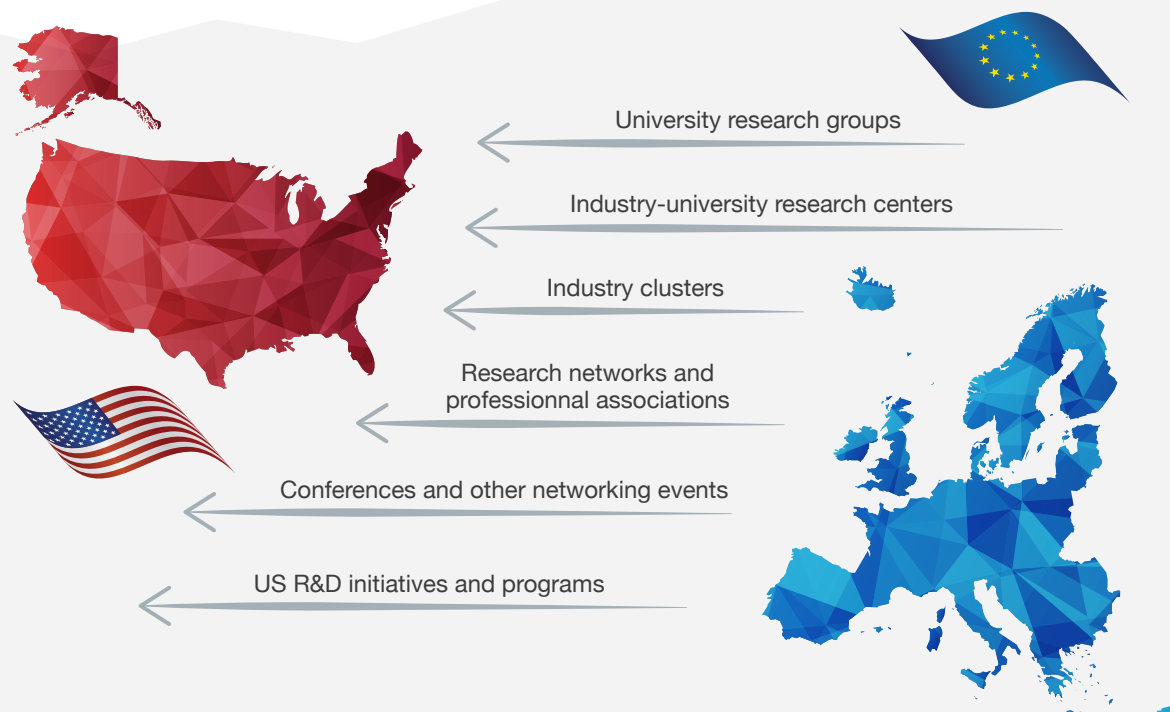
Research to Research



## US RESEARCH LANDSCAPE FACTS & FIGURES

- The US is the international leader in R&D investment, both in public and private sectors.
- In 2016, the US accounted for approximately a quarter of the global R&D investment (25.6%).
- The US total spending on R&D in 2016 reached \$512 billion, which represents about 2.8% of the Gross Domestic Product (GDP).
- The US research landscape is comprised of world leading universities, research centers, research networks and industry clusters that are funded primarily by an extensive network of federal and state funding initiatives and industry endowments.
- R&D programs are mainly supported by industry (\$366 billion), the Federal Government (\$43 billion), academia (\$75 billion), [federally funded R&D centers \(FFRDC\)](#) (\$19 billion), and non-profit (\$23 billion) investments.
- The most important departments and agencies, in terms of level of R&D effort, are the [Department of Defense \(DoD\)](#), [National Institutes of Health \(NIH\)](#), [National Aeronautics and Space Administration \(NASA\)](#), [Department of Energy \(DoE\)](#) and the [National Science Foundation \(NSF\)](#).

## APPROACH TO THE US RESEARCH LANDSCAPE

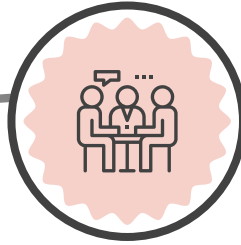


## INITIAL APPROACH



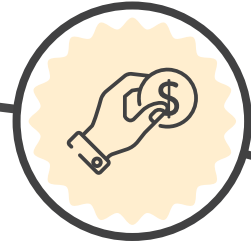
### CONTACT

Identify leading US researchers, research groups and research organizations. They can be contacted directly by European researchers in order to develop a rapport and potential interest to collaborate.



### MEET

Identify relevant networks and conferences that can be used as an avenue to meeting potential collaborators.



### FUND

Identify and assess the opportunity to participate in US funding programs related to specific R&D activities in order to propose potential project opportunities to US research counterparts.

## FINDING THE RIGHT RESEARCH PARTNER

The US research community is highly complex, thus it is important to identify the leading university research groups, industry-university research centers and industry clusters that conduct R&D activities in your field of interest.

### Leading University Research Groups:

Contact the International Offices' of the [US leading universities](#).

Examples:

- [Princeton University](#)
- [Harvard University](#)
- [Stanford University](#)
- [Yale University](#)
- [Columbia University](#)

### Leading Industry Clusters

Analyze cluster mapping initiatives.

Examples:

- [US Cluster Mapping](#)
- [European Cluster Collaboration Platform](#)



### Leading Industry-University Research Centers

Contact programs and networks.

Examples:

- [NSF's Industry-University Cooperative Research Centers Program](#)
- [National and Federal Laboratories and Research Centers](#)

### Matchmaking Events

Attend matchmaking events.

Examples:

- [NearUS Networking Events](#)
- [BILAT USA 4.0. Missions](#)
- [ECCP Missions](#)
- [EURAXESS North America Events](#)

## FUNDING PROGRAMS AVAILABLE IN THE US

- Opportunities for EU researchers to obtain US funding for their projects are [limited](#).
- There are [26 US federal organizations](#) that provide grants for scientific research and education programs across a wide range of disciplines and fields of study.
- There are several databases which provide information regarding US federal grants.
- Detailed information regarding the application process for US funding schemes is difficult to obtain by citizens of other countries.
- US Federal applications could be time consuming and may require some experience with the US Federal contracting procedures, which could act as an obstacle to European partners.
- Grants are often awarded within three months of the submission date.
- Success rates of proposals vary widely. DoD and DoE grants tend to have slightly higher success rates.



## HOW TO APPLY TO US FUNDING OPPORTUNITIES

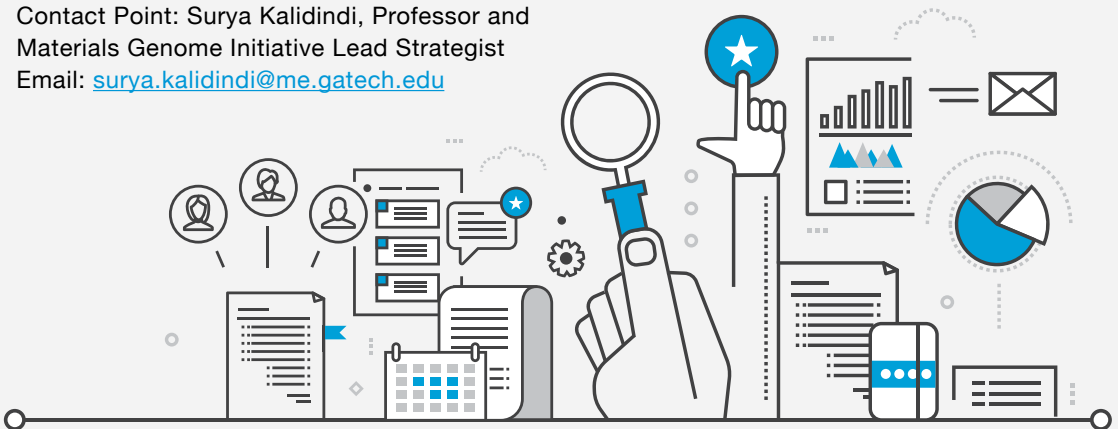
- All the official information about the federal grants is available through the [Funding Opportunity Announcement \(FOA\) document](#). Each funding opportunity requires different needs and requirements.
- Normally, a set of pre-requisites or registrations are needed for submission.
- Applications are submitted online, mainly through the “[grants.gov](#)” website or through [agency-specific submitting systems](#).
- European applicants need to complete the same registration process as domestic applicants; however, there are additional steps for this registration process.
- European researchers interested in federal grants, should reach out to the point of contact identified in each funding opportunity.



## RESEARCH ORGANIZATIONS

Contacts of research organization that could support European researchers in identifying potential US partners include

- **Global Network of Entrepreneurial Ecosystem Builders InBIA (InBIA)**  
[www.inbia.org](http://www.inbia.org)  
 Contact Point: Patty Stephens, Program Administrative Manager  
 Email: [pstephens@inbia.org](mailto:pstephens@inbia.org)
- **American Association for the Advancement of Science (AAAS)**  
[www.aaas.org](http://www.aaas.org)  
 Contact Point: Tom C. Wang, Director for International Cooperation  
 Email: [twang@aaas.org](mailto:twang@aaas.org)
- **Woodrow Wilson International Center for Scholars (WWICS)**  
[www.wilsoncenter.org](http://www.wilsoncenter.org)  
 Contact Point: Anne Bowser, Senior Program Associate  
 Email: [Anne.Bowser@wilsoncenter.org](mailto:Anne.Bowser@wilsoncenter.org)
- **SRI International (SRI)**  
[www.sri.com](http://www.sri.com)  
 Contact Point: Jeffrey Alexander, Associate Director for Research & Analytics  
 Email: [jeffrey.alexander@sri.com](mailto:jeffrey.alexander@sri.com)
- **Georgia Tech Research Cooperation (GTRC)**  
[www.gtrc.gatech.edu](http://www.gtrc.gatech.edu)  
 Contact Point: Surya Kalidindi, Professor and Materials Genome Initiative Lead Strategist  
 Email: [surya.kalidindi@me.gatech.edu](mailto:surya.kalidindi@me.gatech.edu)
- **American Institutes for Research (AIR)**  
[www.air.org](http://www.air.org)  
 Contact Point: David Seidenfeld, Vice President, International Research and Evaluation  
 Phone number: (202) 403-5000
- **Miami-Florida Jean Monnet Center of Excellence**  
[www.miamieuc.fiu.edu](http://www.miamieuc.fiu.edu)  
 Contact Point: Christine I. Caly-Sanchez, Associate Director  
 Email: [calyc@fiu.edu](mailto:calyc@fiu.edu)
- **Research Triangle Institute**  
[www.rti.org](http://www.rti.org)  
 Contact Point: Paul Weisenfeld, Executive Vice President, International Development  
 Phone Number: +1 919 541 7340
- **Carnegie Mellon University Office of Corporate and Institutional Partnerships**  
[www.cmu.edu/corporate](http://www.cmu.edu/corporate)  
 Contact Point: Michael Harding, Assistant Director  
 Email: [michaelharding@cmu.edu](mailto:michaelharding@cmu.edu)



## SPECIFIC AGENCY REPRESENTATIVES

Contacts of Specific Agency Representatives that could support European researchers in identifying potential US partners include

- **NSF Biological Sciences (BIO)**  
[www.nsf.gov/dir/index.jsp?org=BIO](http://www.nsf.gov/dir/index.jsp?org=BIO)  
Contact Point: James L. Olds, Assistant Director  
Email: [jolds@nsf.gov](mailto:jolds@nsf.gov)
- **NSF Mathematical and Physical Sciences (MPS)**  
[www.nsf.gov/dir/index.jsp?org=MPS](http://www.nsf.gov/dir/index.jsp?org=MPS)  
Contact Point: James S. Ulvestad, Assistant Director (Acting)  
Email: [julvesta@nsf.gov](mailto:julvesta@nsf.gov)
- **NSF Computer and Information Science and Engineering (CISE)**  
[www.nsf.gov/dir/index.jsp?org=CISE](http://www.nsf.gov/dir/index.jsp?org=CISE)  
Contact Point: James Kurose, Assistant Director  
Email: [jkurose@nsf.gov](mailto:jkurose@nsf.gov)
- **NSF Social, Behavioral and Economic Sciences (SBE)**  
[www.nsf.gov/dir/index.jsp?org=SBE](http://www.nsf.gov/dir/index.jsp?org=SBE)  
Contact Point: Fay Cook, Assistant Director  
Email: [fcCook@nsf.gov](mailto:fcCook@nsf.gov)
- **NSF Education and Human Resources (EHR)**  
[www.nsf.gov/dir/index.jsp?org=EHR](http://www.nsf.gov/dir/index.jsp?org=EHR)  
Contact Point: William (Jim) Lewis, Assistant Director (Acting)  
Email: [wjlewis@nsf.gov](mailto:wjlewis@nsf.gov)
- **DOD Collaborative Technology Alliances (CTAs)**  
[www.arl.army.mil/www/default.cfm?page=93](http://www.arl.army.mil/www/default.cfm?page=93)  
Contact Point: Tamara Christenson  
Email: [tamara.r.christenson.civ@mail.mil](mailto:tamara.r.christenson.civ@mail.mil)
- **NSF Engineering (ENG)**  
[www.nsf.gov/dir/index.jsp?org=ENG](http://www.nsf.gov/dir/index.jsp?org=ENG)  
Contact Point: Dawn M. Tilbury, Assistant Director  
Email: [dmtilbur@nsf.gov](mailto:dmtilbur@nsf.gov)
- **National Center for Advancing Translational Sciences (NCATS)**  
[ncats.nih.gov](http://ncats.nih.gov)  
Contact Point: Anna L. Ramsey-Ewing, Ph.D  
Email: [anna.ramseyewing@nih.gov](mailto:anna.ramseyewing@nih.gov)
- **NSF Geosciences (GEO)**  
[www.nsf.gov/dir/index.jsp?org=GEO](http://www.nsf.gov/dir/index.jsp?org=GEO)  
Contact Point: William E. Easterling, Assistant Director  
Email: [weasterl@nsf.gov](mailto:weasterl@nsf.gov)
- **Economic Development Administration (EDA)**  
[www.eda.gov](http://www.eda.gov)  
Contact Point: Linda Cruz-Carnall, Regional Director  
Email: [LCruz-Carnall@eda.gov](mailto:LCruz-Carnall@eda.gov)
- **NSF International Science and Engineering (OISE)**  
[www.nsf.gov/dir/index.jsp?org=OISE](http://www.nsf.gov/dir/index.jsp?org=OISE)  
Contact Point: Tracey Lynn Williams, International Activities Assistant  
Email: [trawilli@nsf.gov](mailto:trawilli@nsf.gov)
- **US Small Business Administration (SBA)**  
[www.sba.gov](http://www.sba.gov)  
Contact Point: Holly Turner, Office of Intergovernmental Affairs  
Email: [holly.turner@sba.gov](mailto:holly.turner@sba.gov)

## PRIVATE ORGANIZATIONS

Contacts of Private Organizations that could support European researchers in identifying potential US partners include

- **National Council of University Research Administrators (NCURA)**

[www.ncura.edu/AboutUs.aspx](http://www.ncura.edu/AboutUs.aspx)

Contact Point: Ms. Claire Chen, NCURA Global

Email: [chen@ncura.edu](mailto:chen@ncura.edu)

- **European American Business Organization Inc. (EABO)**

[www.eabo.biz](http://www.eabo.biz)

Contact Point: Henry G. Meyer-Oertel, Partner

Email: [hmeyeroertel@eabo.biz](mailto:hmeyeroertel@eabo.biz)

- **European American Enterprise Council (EAEC)**

[www.eaecouncil.com](http://www.eaecouncil.com)

Contact Point: Blandine Chantepie-Kari, Vice

President, University & Entrepreneurship

LinkedIn Profile: <https://www.linkedin.com/in/blandinechantepie>

- **Sociedade Portuguesa de Inovação (SPI)**

[www.spi.pt/en.index](http://www.spi.pt/en.index)

Contact Point: Francisco Rocha, Senior Consultant

Email: [franciscorocha@spi.pt](mailto:franciscorocha@spi.pt)

- **Innovation Research Interchange (IRI)**

[www.iriweb.org](http://www.iriweb.org)

Contact Point: Ed Bernstein

Email: [bernstein@iriweb.org](mailto:bernstein@iriweb.org)



VISIT US

[www.enrich-usa.eu](http://www.enrich-usa.eu)



Horizon 2020  
European Union funding  
for Research & Innovation

ENRICH in the USA is powered by NearUS.  
The NearUS initiative has received funding from the  
European Union's Horizon 2020 research and innovation  
programme under grant agreement no. 733286.

